

# 6 month in Melbourne, Australia

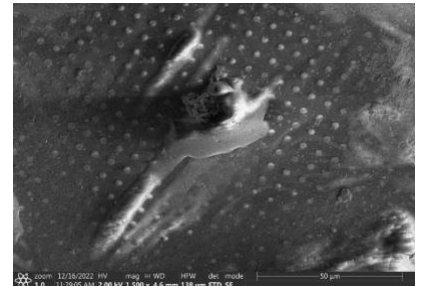
Development of a workflow for targeted subcellular omics

Philippe Van der Stappen

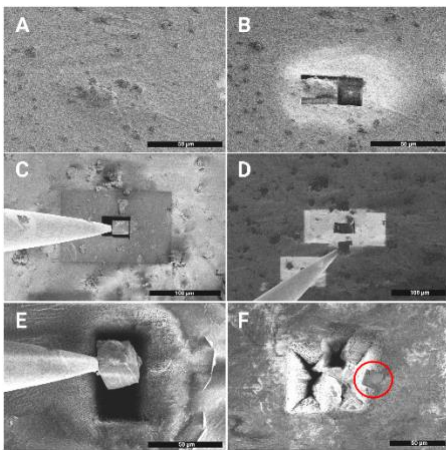
Group of Prof. Dr. Alex de Marco, Monash University, Clayton

**Going abroad not only offers the opportunity for great scientific experiences but also allows you to travel. You will see the most amazing places and meet the most amazing people!**

For my project, we developed a method to target and isolate subcellular regions of a cell (right Figure 1). These subcellular regions can be used for various downstream experiments such as proteomics and transcriptomics. We used a cryo-Focused Ion Beam Scanning Electron Microscope (cryo-FIB/SEM). Usually, the FIB is used to thin biological samples to then perform cryo-Electron Tomography (cryo-ET). This allows for the acquisition of 3D high resolution images of the native cellular architecture.



*1 HeLa cell on a cryo-EM grid*



*2 Process of lift-out*

However, for our purpose we used the correlative cryo-FIB/SEM (with an integrated light microscope!) to isolate/cut single cells or subcellular regions and then perform lift-out. This is a process where we lift the isolated regions with a small needle and deposit the sample in a suitable buffer solution (left Figure E & F). Moreover, we were then able to detect RNA of subcellular regions (a quarter of a cell!) through RT-qPCR. Such results will pave the way for targeting, isolating, and analysing subcellular regions in their native state.

I am immensely grateful to have had this opportunity! The support from the institutes was fantastic, I want to say a big thank you! Also, Alex is a great PI who helped getting me down under and it was very pleasant working with the people from the group. Melbourne is an amazing city to

live in. If I can give a tip to anyone who wants to travel Australia: get yourself a car! The Visa class 408 is phenomenal and traveling the east coast is highly recommended!

