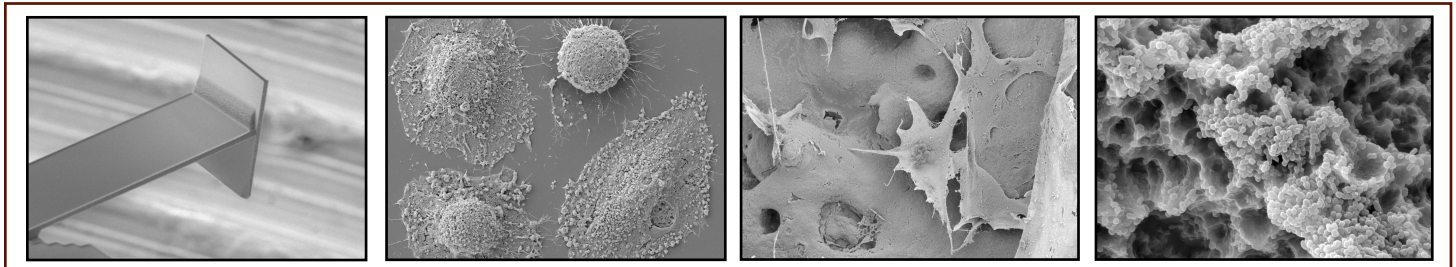




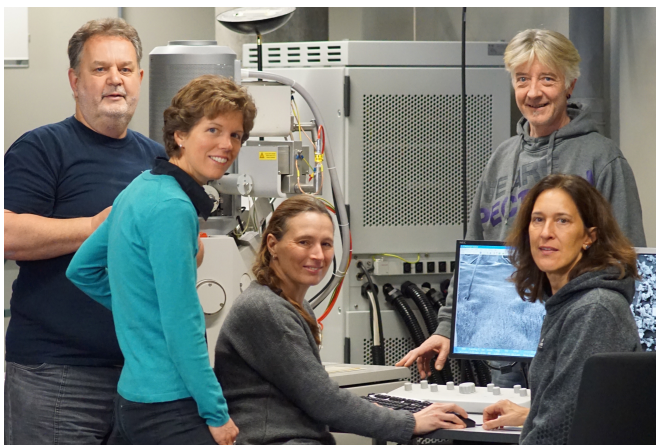
NANO IMAGING LAB

NEWSLETTER

VOLUME I, 9. Januar 2017



Welcome to the Nano Imaging Lab (NI Lab) - your new service unit for imaging and illustration of nano structures

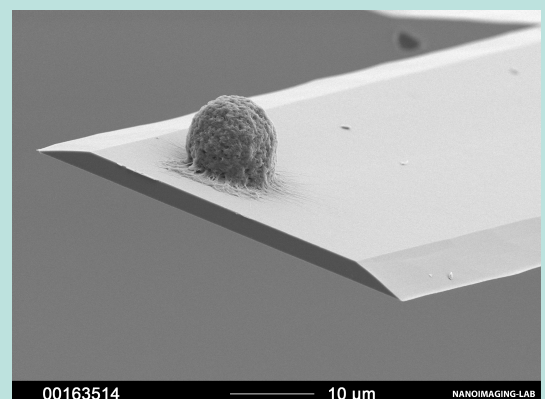


Team of the NI Lab (photo: Christel Moeller)

The NI Lab was founded at the beginning of 2016 and unites members of the former Centre of Microscopy and the Nano Tech Service Lab. We - Evi Bieler, Susanne Erpel, Daniel Mathys, Dr. Monica Schönenberger and the leader of the group Dr. Markus Dürrenberger - possess decades of experience within the illustration of smallest structures. Thanks to our excellent expertise and a varied range of equipment we can deliver optimum service all around the subject Images to customers from the SNI network as well as for external partners. ([pricelist](#))

Nanofabrication

The NI Lab disposes of a scanning electron microscope which is equipped with a focused ion beam (FIB). With this the smallest structures can be worked on. In a cooperation with Professor Edwin Constable of the Department of Chemistry, for example, wafers of solar cells were cut with the FIB and afterwards the layered construction could be examined. For a project of the Professors Christoph Gerber (Department of Physics) and Daniel Müller (D-BSSE) special silicium-cantilevers were produced in precision work of several hours. With these special cantilevers the scientists were capable of fixing single cells and examine the rounding-off-process of the cell during division.



Cantilever produced by FIB (photo: Daniel Mathys)